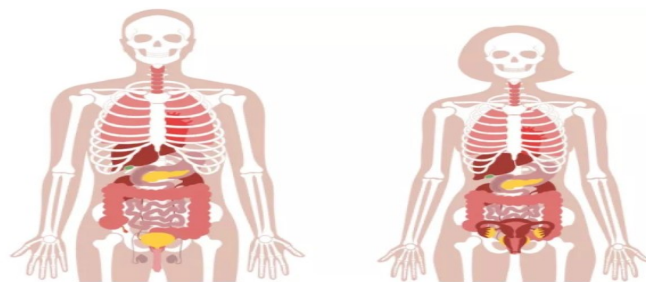


Animals including Humans

Evolution



Prior Knowledge

Year 4 – Be able to describe the simple functions and basic parts of the digestive system.

Year 3 – Be able to identify humans and the levels of nutrition needed.

Year 2 – Be able to identify humans and offspring.

Year 1 – Identify and name a variety of common animals.

Future Learning:

Year 6 - Identify and name the main parts of the human circulatory system, and describe the functions of the heart, blood vessels and blood. within animals, including humans.

My Component Knowledge:

Lesson 1: I can order the stages of human development.

Lesson 2: I can demonstrate the understanding of the growth and development of babies.

Lesson 3: I can explain the main changes that occur during puberty.

Lesson 4: I can explain the main changes that take place in old age.

Lesson 5: I can report findings around gestation periods.

Lesson 6: I can record and interpret data relating to age.

My Composite Knowledge:

I can understand the timeline of growth and development in humans and the changes that are experienced .

My Powerful Knowledge:

I can compare the different stages of life and think about how these relate to animals, myself and others.

Working Scientifically:

Record data and results of increasing complexity using scientific diagrams and labels, classification keys, tables, scatter graphs, bar and line graphs.

Record data and results of increasing complexity using scientific diagrams and labels, classification keys, tables, scatter graphs, bar and line graphs.

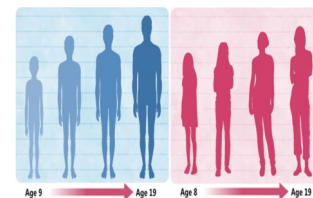
Record data and results of increasing complexity using scientific diagrams and labels, classification keys, tables, scatter graphs, bar and line graphs.

Key Vocabulary

Tier 1: infancy, childhood, adulthood, pubic hair, breasts, invertebrates, vertebrates

Tier 2: foetus, adolescence, genitals, puberty, pre-natal

Tier 3: menstruation, molluscs, myriapods,, echinoderms, arthropods, arachnids, crustaceans



What happens to
your body as you
age?